

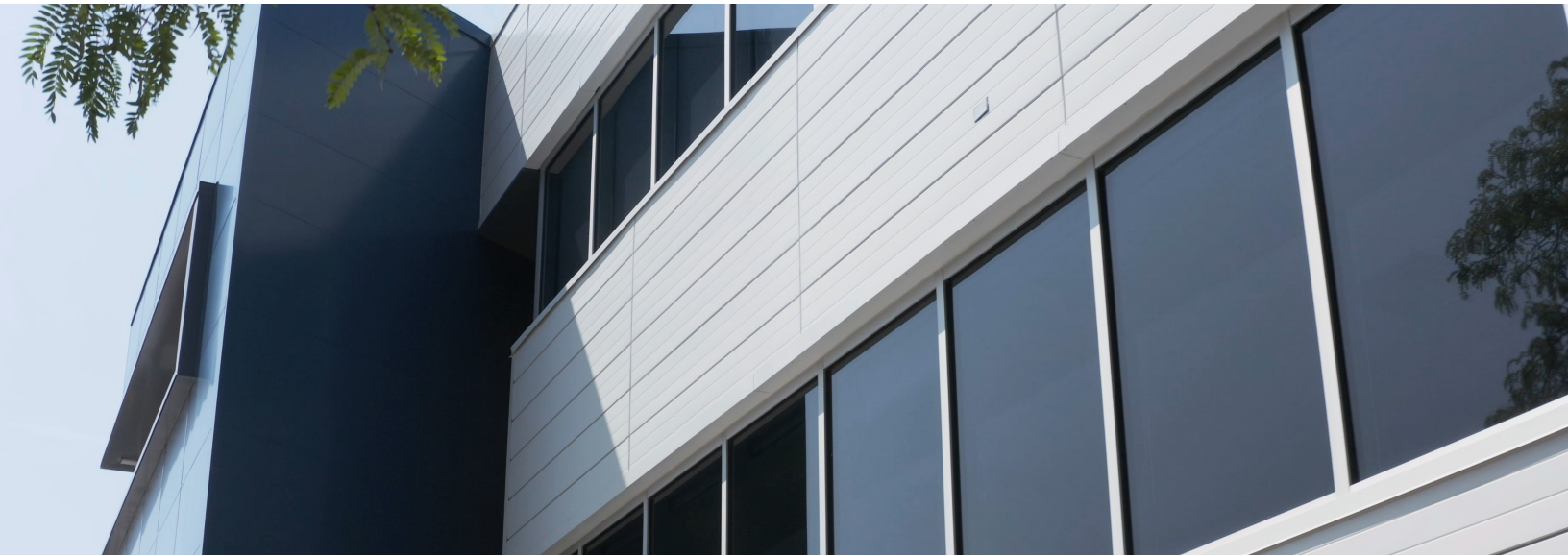
Florida's Top-Rated  
Metal Roofing Supply Company



863-991-3522  
sales@americanmetalfi.com

# ★ ★ ★ ★ ★ 1" FLUSH WALL & SOFFIT PANEL ★ ★ ★ ★ ★

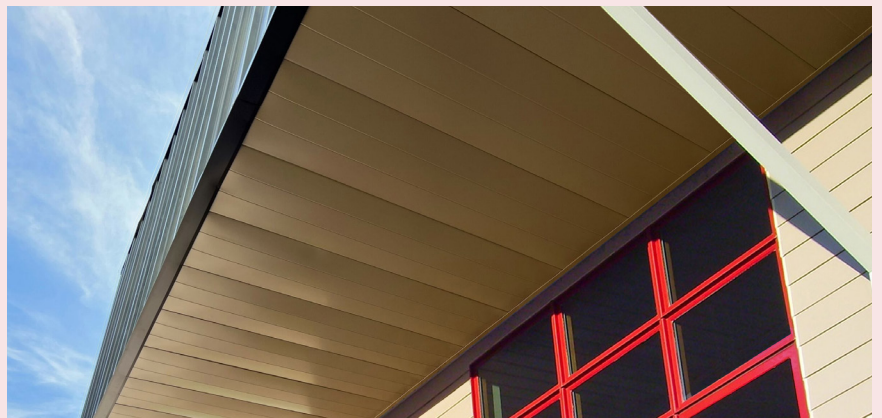
## CONCEALED FASTENER METAL WALL SYSTEMS



### SLEEK, DURABLE AND WEATHER-RESISTANT

Our 1" Flush Wall & Soffit Panel provides a weather-resistant and uniform surface for wall and soffit applications. Interlocking panels are secured with concealed integral fasteners to create unobtrusive vertical seams - no clips or mechanical seaming required. For a modern architectural detail choose an optional 1" reveal to create a shadow appearance. Ideal for commercial, industrial and agricultural projects, the Flush Wall & Soffit Panel can be installed vertically or horizontally.

- ★ Commercial, Industrial and Agricultural Applications
- ★ 1" Deep Panel
- ★ Two Concave Pencil Ribs (Standard) or Mini Ribs
- ★ Flush Seam or 1" Reveal
- ★ Custom Lengths
- ★ Flat, Striated or Stiffening Rib options
- ★ On-Site Rollforming or Factory Production
- ★ 35+ Color/Coating Options
- ★ Material Warranties up to 45 Years†
- ★ Florida Product Approved



Florida's Top-Rated  
Metal Roofing Supply Company



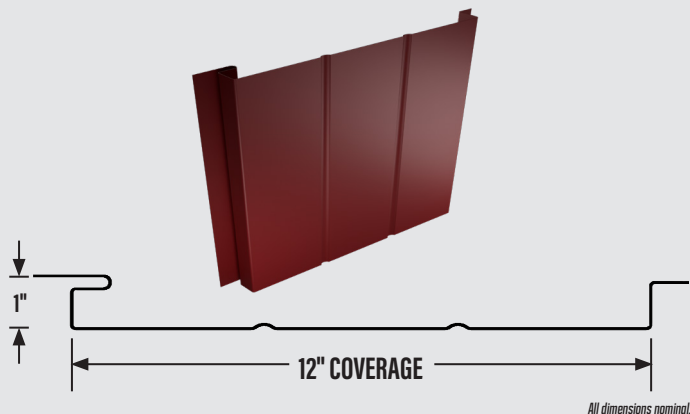
863-991-3522  
sales@americanmetalfi.com

# 1" FLUSH WALL & SOFFIT PANEL

## CONCEALED FASTENER METAL WALL SYSTEMS

### NO REVEAL

Net Coverage: 12" Width  
Vertical Seam Depth: 1"  
Rib Spacing: 4"



### 1" REVEAL

Net Coverage: 12" Width  
Vertical Seam Depth: 1"  
Rib Spacing: 4"



## Wall & Soffit Panel Specifications:

### MATERIAL

- AZ55 - 26ga & 24ga
- AZ50 - 26ga & 24ga
- Aluminum - .032" & .040"
- Copper - 16 oz.

### SUPPORT

- Open Steel Framing
- Open Wood Framing

### SLOPE

- Vertical or Horizontal Plane Only

### COATINGS

- Mill-Finish (AZ55)
- 70% PVDF Kynar 500® (AZ50 24ga & 26ga, Aluminum .032" & .040")
- SMP (AZ50 26ga)

### PANEL STYLE

- Flat
- Striated
- Stiffening Ribs

©2026 AmericanMetalSupply. \*Contact a sales representative for detailed product and warranty information.



AMERICANMETALFL.COM



1/2026