

Florida's Top-Rated
Metal Roofing Supply Company



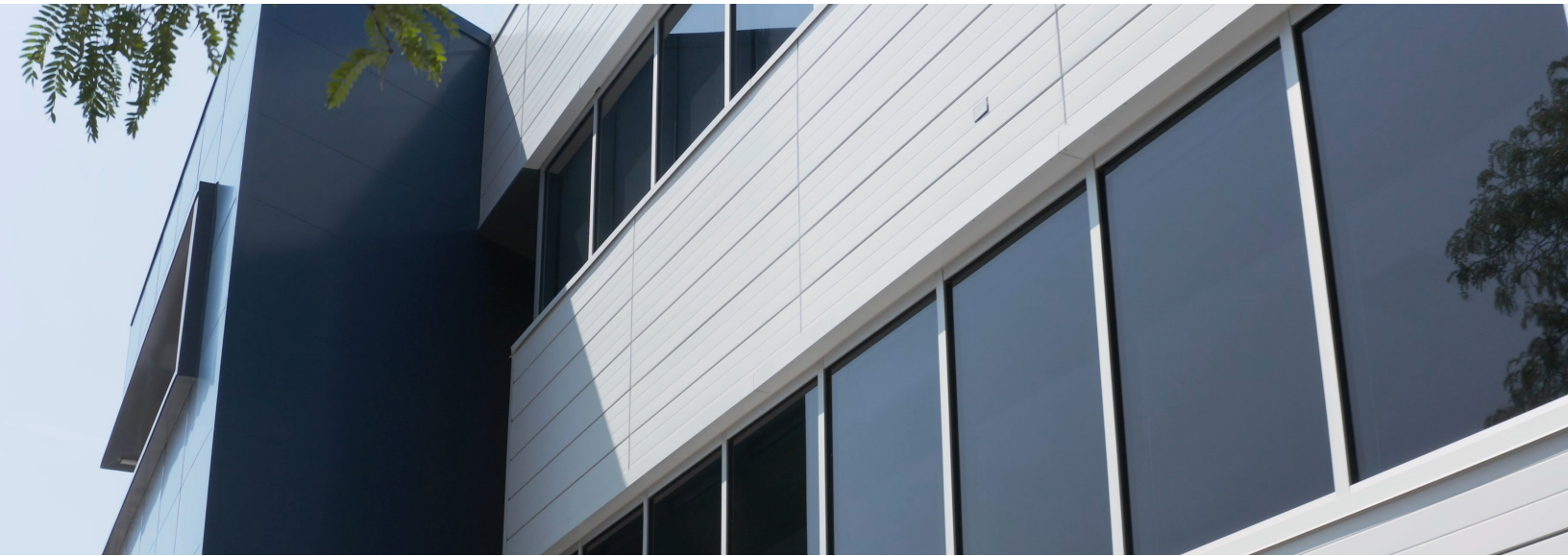
863-202-8200
sales@americanmetalfi.com



CONCEALED FASTENER



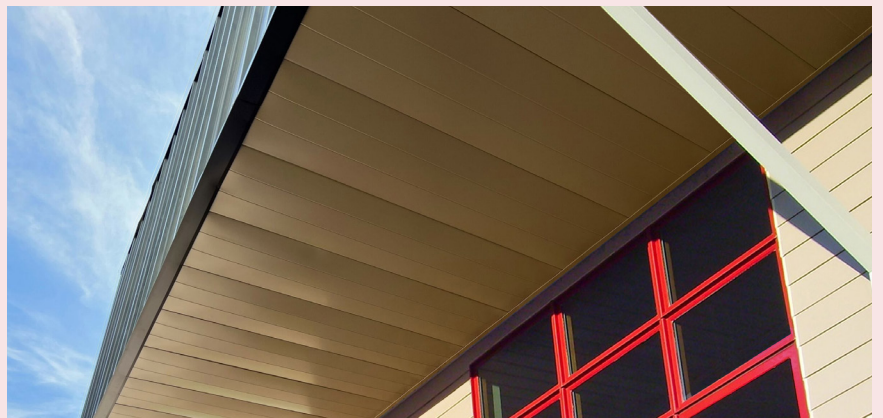
METAL WALL PANEL SYSTEMS 1" Flush Wall & Soffit Panel



SLEEK, DURABLE AND WEATHER-RESISTANT

Our 1" Flush Wall & Soffit Panel provides a weather-resistant and uniform surface for wall and soffit applications. Interlocking panels are secured with concealed integral fasteners to create unobtrusive vertical seams - no clips or mechanical seaming required. For a modern architectural detail choose an optional 1" reveal to create a shadow appearance. Ideal for commercial, industrial and agricultural projects, the Flush Wall & Soffit Panel can be installed vertically or horizontally.

- ★ Commercial, Industrial and Agricultural Applications
- ★ 1" Deep Panel
- ★ Two Concave Pencil Ribs (Standard) or Mini Ribs
- ★ Flush Seam or 1" Reveal
- ★ Custom Lengths
- ★ Flat, Striated or Stiffening Rib options
- ★ On-Site Rollforming or Factory Production
- ★ 35+ Color/Coating Options
- ★ Material Warranties up to 45 Years†
- ★ Florida Product Approved



Florida's Top-Rated
Metal Roofing Supply Company



863-202-8200
sales@americanmetalfi.com



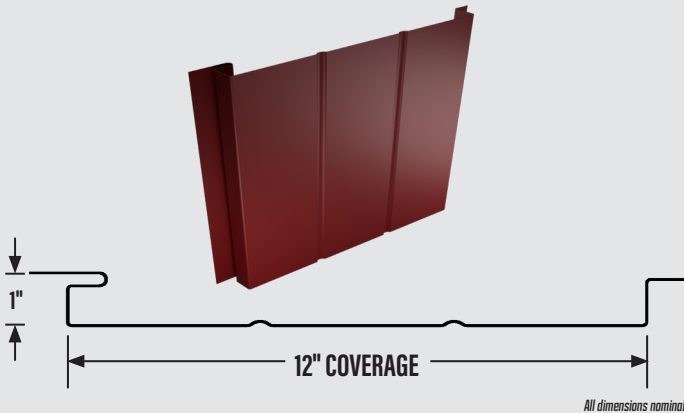
CONCEALED FASTENER



METAL WALL PANEL SYSTEMS 1" Flush Wall & Soffit Panel

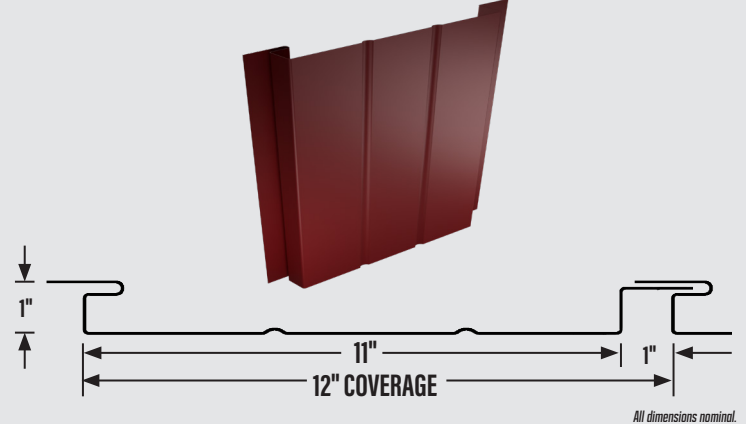
NO REVEAL

Net Coverage: 12" Width
Vertical Seam Depth: 1"
Rib Spacing: 4"



1" REVEAL

Net Coverage: 12" Width
Vertical Seam Depth: 1"
Rib Spacing: 4"



Wall & Soffit Panel Specifications:

MATERIAL

- AZ55 - 26ga & 24ga
- AZ50 - 26ga & 24ga
- Aluminum - .032" & .040"
- Copper - 16 oz.

SUPPORT

- Open Steel Framing
- Open Wood Framing

SLOPE

- Vertical or Horizontal Plane Only

COATINGS

- Mill-Finish (AZ55)
- 70% PVDF Kynar 500® (AZ50 24ga & 26ga, Aluminum .032" & .040")
- SMP (AZ50 26ga)

PANEL STYLE

- Flat
- Striated
- Stiffening Ribs

©2025 AmericanMetalSupply. *Contact a sales representative for detailed product and warranty information.



AMERICANMETALFL.COM



05/2025